

**Construction News Bi-Weekly Project Update  
March 6, 2017 – March 18, 2017**



**Rehabilitation of Bridge No. 00163A, I-95 over West River and State Route 745 in the Towns of West Haven and New Haven**

**INSIDE THIS NEWSLETTER:** Interstate Impacts/Local Road Impacts/Potential Vibration/Noise Construction Activities/Site Progress Photos/Work Zone Safety Tips

**INTERSTATE IMPACTS:**

- None

**SEA STREET IMPACTS:**

- Work associated with the traffic calming and roundabout revisions on Sea Street will begin in March 2017, starting with the removal of trees and shrubs between the CTDOT Maintenance Building driveway and Greenwich Avenue.

**LOCAL ROAD IMPACTS:**

- Installation of Piles and Pouring Concrete for the Footings of New Bridge No. 163 over the West River
- Installation and Grading of Fill between Bridge Nos. 163 and 164
- Installation of Stay-in-Place Deck Forms and Overhang Brackets for Bridge No. 164 over Ella Grasso Boulevard

**POTENTIAL VIBRATION/NOISE CONSTRUCTION ACTIVITIES:**

- Daytime activities that may create vibrations and/or noise are scheduled to occur throughout the period from Monday, March 6, 2017 to Saturday, March 18, 2017.

## PRE-SPRING DRIVING TIPS

Spring is often the time when road work begins or resumes, so expect construction. Pothole repairs, highway maintenance and other road repairs may slow your drive and, quite possibly, tax your patience. Stay calm, slow down and be aware of the conditions around you. Be especially careful driving through work zones. Increase your following distance and avoid distractions.

If the weather should turn ugly, which has been known to happen in spring, know when you need to pull off the road and seek shelter. If you get caught in severe weather that makes driving hazardous, find a safe place to park until weather conditions improve.

Likewise, if the weather turns cold and the temperature dips below freezing, icy conditions may make roads slick and driving hazardous. If you do encounter icy roads, reduce your speed and increase your following distance.

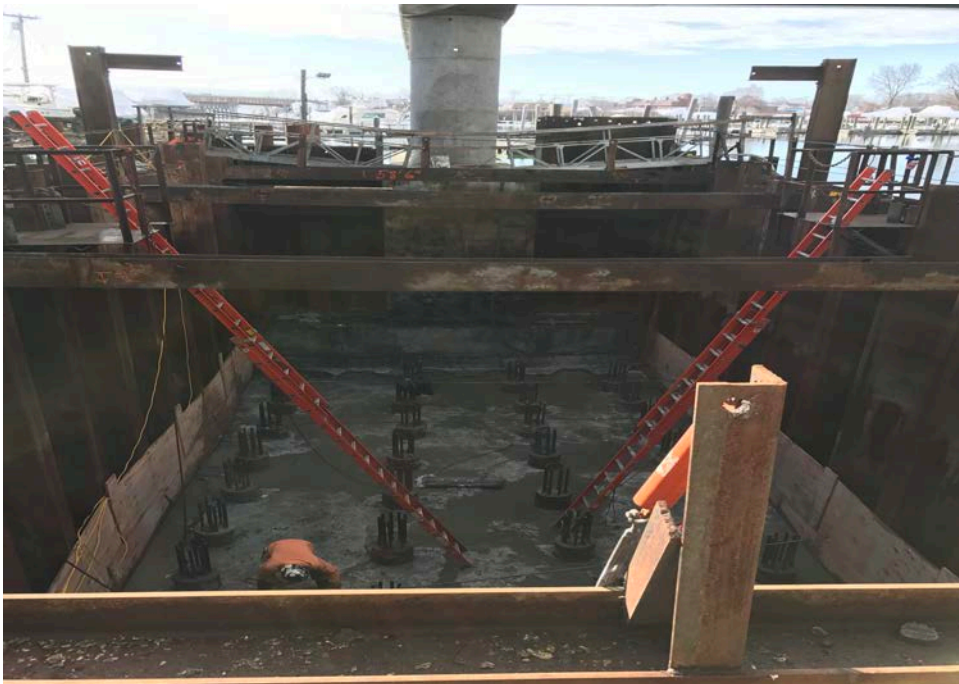
Deer, bears and other wild animals become more populous in the spring, as the warmer weather brings animals out of hibernation. Be alert for wildlife in the road, and slow down so you can stop safely if animals are on or near the roadway.



BR163 Abutment 2 Stage 3 Piles Being Grouted



BR163 Pier 3 Cofferdam



BR163 Pier 3 Piles, Footing is Prepped for Reinforcing Steel

**FOR MORE INFORMATION CONTACT:**

[Project Resident Engineer](#)

George Cooper

Office: 475-238-8538

[Connecticut Department of Transportation Project Engineer](#)

Ghazi Alsaqri

Office: 475-238-8538

The Connecticut Department of Transportation is working to inform local residents of current and upcoming construction activities through bulletins such as this. For additional information on this Project and other Projects, please visit the Connecticut Department of Transportation Project website: ([www.i95westriver.com](http://www.i95westriver.com)). Please feel free to contact [jean.streeto@ct.gov](mailto:jean.streeto@ct.gov) any questions, concerns or to add your contact information to our distribution list.