



Construction News

Bi-Weekly Project Update
April 27 – May 9, 2015

DOT Project: 0092-0522

Rehabilitation of Bridge No. 00163A, I-95 over West River and SR 745 in the towns of West Haven and New Haven.

INSIDE THIS NEWSLETTER

April 27 – May 9, 2015

Interstate Impacts

Local Road Impacts

Potential Vibration/Noise construction activities

Site Progress photos

Work Zone Safe Driving Tip

Interstate Impacts:

- There are no scheduled impacts on I-95 for this period.

Local Roads Impacts:

- Begin demolition of permanently closed I-95 SB Exit 44 loop ramp.
- Installation of the noise barrier wall along the new on-ramp from Ella Grasso Boulevard to I-95 NB.
- Installation of piles for the new I-95 NB Bridge over Ella Grasso Boulevard.
- Pouring of the concrete deck for new bridge over the West River.
- Kimberly Avenue roadway reconstruction.
- Installation of drainage along Ella Grasso Boulevard Extension.

Potential Vibration/Noise Construction Activities:

- Daytime and nighttime activities that may create vibrations and/or noise are scheduled to occur throughout the period from Monday, April 27, 2015 to Saturday, May 9, 2015.

Work Zone Safe Driving Tip:

- The most common crash in a highway work zone is the rear-end collision, so remember to leave two seconds of braking distance between you and the car in front of you. The amount of space required to provide two seconds of stopping time will increase the faster you're driving.

Why is a new Bridge being built?

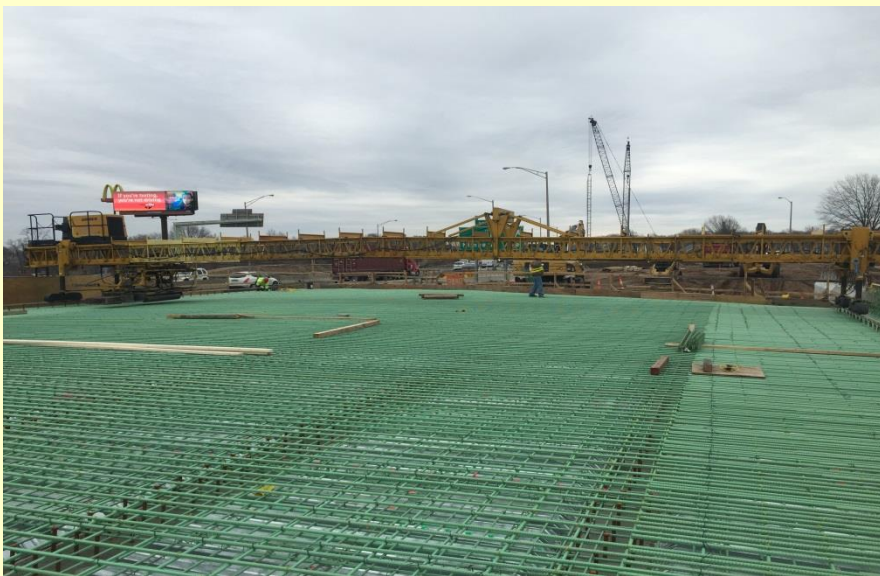
Built in 1958, the bridge has weathered over 50 years of unforgiving New England weather and continually growing traffic (approximately 135,000 cars and trucks per day!). The Bridge must be replaced to continue to support the growing traffic demands of this crossing of the West River.

What is involved in the construction of the bridge?

Prior to construction of the bridge work construction of a temporary work trestle over water and wetlands will be erected. This will allow access to construct the substructure/piers. The 5 new piers for the Bridge rest on driven concrete piles. Concrete substructures rest on the pile groups and the structural steel superstructure is placed on the piers followed by a concrete deck and asphalt overlay.



- **Parapet Slipform Mockup**



When will bridge construction be complete?

Construction is currently scheduled for completion in Fall 2018.

- **Bridge 163 Bridge Deck Before Concrete pour**



For More Information

Project Contact:
George Cooper
Resident Engineer
Office: 475-238-8538

Project Contact:
Ghazi Alsaqri
CT DOT Project Engineer
Office: 475-238-8538

The Connecticut Department of Transportation is working to inform local residents of current and upcoming construction activities through bulletins such as this. For additional information on this project and other projects, please visit the Connecticut Department of Transportation Project website (www.i95westriver.com). Please feel free to contact daria.kania@ct.gov with any questions, concerns, or to add your contact information to our distribution list.