

Construction News Bi-Weekly Project Update
April 3, 2017 – April 15, 2017



Rehabilitation of Bridge No. 00163A, I-95 over West River and State Route 745 in the Towns of West Haven and New Haven

INSIDE THIS NEWSLETTER: Interstate Impacts/Local Road Impacts/Potential Vibration/Noise Construction Activities/Site Progress Photos/Work Zone Safety Tips

INTERSTATE IMPACTS:

- None

SEA STREET IMPACTS:

- U.I. pole relocation work, associated with the traffic calming and roundabout revisions on Sea Street, has been approved by CT DOT and is expected to begin in the near future.

LOCAL ROAD IMPACTS:

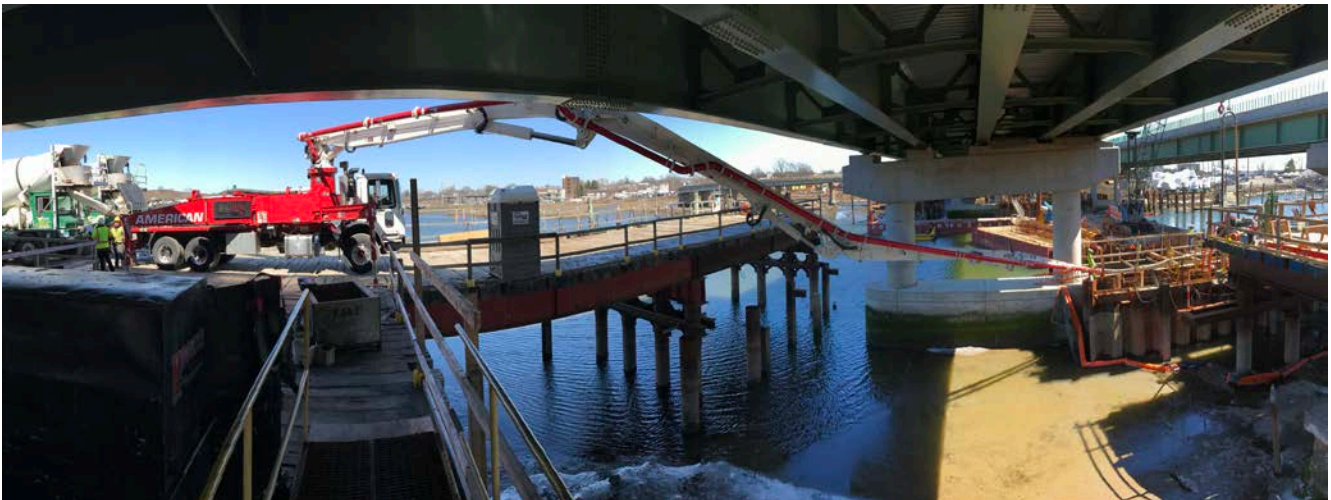
- Installation of Piles and Pouring Concrete for the Substructures of New Bridge No. 163 over the West River
- Removal of Portions of the Temporary Work Trestle for Bridge No. 163
- Pouring Concrete for the Deck of Bridge No. 164 over Ella Grasso Boulevard

POTENTIAL VIBRATION/NOISE CONSTRUCTION ACTIVITIES:

- Daytime activities that may create vibrations and/or noise are scheduled to occur throughout the period from Monday, April 3, 2017 to Saturday, April 15, 2017.

2017 National Work Zone Awareness Week – April 3-7, 2017

- **Expect the Unexpected. Things may change overnight on the routes you travel every day. Normal speed limits may be reduced; traffic lanes and sidewalks may be closed, narrowed, or shifted; and people may be working on or near the road.**
- **Stay Alert. Dedicate your full attention to the roadway and avoid distraction while approaching and driving/walking/biking in a work zone.**
- **Keep a Safe Distance between you and the car ahead of you. Rear-end collisions account for 30% of work zone crashes.**
- **Obey Speed Limit. Speeding is one of the major causes of work zone crashes.**
- **Keep Up with the Traffic Flow. Don't slow down to look at road work.**
- **Obey Road Crew Flaggers and Pay Attention to the Signs. The flagger knows what is best for moving all road users safely through the work zone. The construction signs are there to help everyone move safely through the work zone.**
- **Know Before You Go. Check radio, TV, and websites for traffic information; and schedule enough time so you can reach your destination on time and safely.**
- **Be Patient and Stay Calm. Work zones are not there to personally inconvenience you. Remember, the crew members are working to improve the transportation system.**
- **Wear Your Seatbelt. It is your best defense in a crash.**
- **Slow down when the signs say to. A car traveling 60 m.p.h. travels 88 feet per second. If you're going 60 m.p.h., and you pass a sign that states, "Road Work 1,500 feet," you'll be in that work zone in 17 seconds.**



Pier 2 Grouting TaperTube Piles

FOR MORE INFORMATION CONTACT:

[Project Resident Engineer](#)
George Cooper
Office: 475-238-8538

[Connecticut Department of Transportation Project Engineer](#)
Ghazi Alsaqri
Office: 475-238-8538

The Connecticut Department of Transportation is working to inform local residents of current and upcoming construction activities through bulletins such as this. For additional information on this Project and other Projects, please visit the Connecticut Department of Transportation Project website: (www.i95westriver.com). Please feel free to contact jean.streeto@ct.gov any questions, concerns or to add your contact information to our distribution list.